

GENERAL INFORMATION

This mailer is intended to detail various aspects of waste disposal in Barkhamsted, New Hartford and Winchester. It has information for both hauler-serviced residents as well as Transfer Station users.

The District has an extensive recycling program in order to minimize waste disposal costs, raise revenue and comply with state laws. We strongly encourage you to read on and recycle as much waste as possible. The Transfer Station is open to residents who **do not have a sticker** for **recycling only** on Wednesday evenings from 4-7 PM; sticker holders may also dump trash in the lower homeowner drop-off area during these hours.

PRODUCT STEWARDSHIP

Product Stewardship laws enacted by the State allow electronics (computers, monitors, printers, TV's, etc.), paint (oil & latex paint & stain), mattresses and box-springs, to be dropped at the Transfer Station for no fee. The manufacturers pay for the costs of recycling/disposal of these items through a product surcharge at the time of purchase.

SINGLE-STREAM RECYCLING

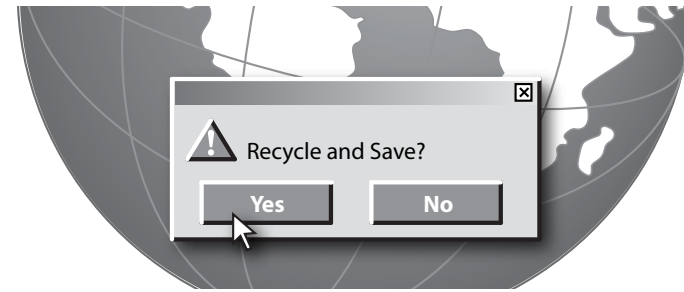
NEWSPAPER, MAGAZINES, JUNK MAIL, OFFICE PAPER, SOFT-COVERED BOOKS, FOOD/BEVERAGE/PERSONAL CARE CONTAINERS MADE FROM PLASTICS #1 - #7, GLASS, METAL CANS, WAXED CARDBOARD, ASEPTIC PACKAGING AND CARDBOARD

The processing plant in Hartford allows the items referenced above to be mixed together. This makes accumulation, storage and transportation of these items more convenient for you. We ask that you keep cardboard separate and deposit it in the compactor hopper just before the recycling building; compacting makes transportation more economical. (See next section.) For hauler-serviced residents you should consult with your hauler about your collection container. Large plastic containers including 5-gallon size now go in with the single-stream. Please do not crush or flatten containers, this makes separation at the Hartford Plant difficult. NO CONTAINERS WITH AUTO

CHEMICALS, NO PLASTIC BAGS, NO WINDOW GLASS, NO LIGHT BULBS, NO DRINKING GLASSES, NO CERAMICS, NO BLUEPRINTS AND NO CHRISTMAS WRAPPING PAPER ARE ALLOWED! These and any broken glass containers should be put in the trash. All aluminum, including foil should be deposited in the hopper marked aluminum between the garbage compactors.

CARDBOARD/BOXBOARD

Clean corrugated cardboard and box board may be recycled together and should be free of Styrofoam or any other contaminants. You can include brown grocery bags, paper pet/bird food bags, and grain/feed bags in this container. These items should be deposited in the cardboard compactor hopper just before the red recycling building.



WASTE OIL AND FILTERS

Motor oil, transmission, gear and hydraulic oil, kerosene and diesel fuel are accepted. Generally a gallon jug or 5-gallon pail is the best method for bringing waste oil into the recycling building, where it is poured into a holding tank. Special arrangements can be made for 55-gallon drums. NO GASOLINE or oil CONTAMINATED with paint thinner or solvents can be accepted. We DO accept used oil filters — they should be drained for 12 hours immediately after changing. See the inspector for placement.

ANTIFREEZE

Antifreeze is accepted; separate from, but in the same manner as waste oil.

BATTERIES

We accept automotive and dry cell batteries for recycling. They may be placed in the covered shed against the office building. Dry cell alkaline batteries are not recyclable and may be disposed of with your trash.

CLOTHING

Clothing, as well as all accessories (i.e., handbags, shoes, jewelry, etc.) should be brought into the recycling building and given to attendant. They will inspect and make sure that things are bagged properly for depositing into the chute between the building and refuse compactors.

TIRES & TIRE TUBES

The fee for all tires (passenger, light truck, large truck, and tractor) is \$40/ton. If they are on a rim it is \$2/each. Tubes may be included with the tires or deposited in hopper near Electronics – Lower Level.

BOOKS

Hard and soft-covered books may be placed in the container next to the Electronics. NO encyclopedias, damaged or moldy books allowed; these go in the garbage.

LEAVES/GRASS CLIPPINGS

We accept leaves, grass clippings and other organic yard waste for composting. These items CANNOT be included in with your trash. If transported in plastic bags, the contents must be emptied from the transporting; container. Product may remain in paper lawn bags. We strongly urge you to begin backyard composting of these materials. NO BRUSH with these items.

FLUORESCENT TUBES

Because of their mercury content, these tubes are accepted for special disposal (NO broken tubes). We accept ALL tubes regardless of size or shape, including compact bulbs. Leave in recycling building.

ELECTRONICS

We are accepting all electronics, including TV's (tubes, flat screens & projection TVs) for recycling free of charge. These and heavy/large copiers need to be disposed of in the Bulky Waste Area. Electronics are to be placed in the clearly marked "Electronics" shed along the side of the office building/garage in the lower area. Remove all batteries and cut the cords, place these in their proper recycling area. NO APPLIANCES WITH FREON. Please see attendant for assistance.

BULKY WASTE

We now have a scale in the Bulky Waste area. When coming in with waste you need to scale in and the attendant will further instruct you. The composite fee is \$50/ton for trash, landfill waste and oversized furniture and rugs. Unsorted demolition waste and over-sized lumber is \$90/ton. No fees for metal or cardboard. A statement of fees is posted on the side of the scale building. Separate your waste to minimize your fees. Clean asphalt singles (no metal or trash) may be disposed of for \$35/ton because these can be recycled, contaminated shingles are \$75/ton. The Bulky Waste Area is open from 7:15AM to 3:00PM. DON'T FORGET to scale out and pay your fees. THERE IS A PENALTY FEE FOR NOT SCALING OUT. You may call the scale-house operator directly at 860-379-1972, ext. 106 with any bulky waste disposal question.

SCRAP METAL

The District has an extensive separation program for scrap metal because all of it is recyclable. There are hoppers on either side of the garbage compactors (lower level) for small household items. Aluminum, copper, brass, lead and other valuable metals are separated, also electrical wire, cast iron and heavier steel. Please see the attendant for proper placement. There is a charge for appliances that have Freon. This charge is necessary to defray the cost of its extraction. There are no fees for other scrap metal dumping.

BRUSH, CLEAN WOOD, PALLETS

Brush, clean wood and pallets are separated and accumulated for grinding. The disposal of wood waste is costly to the District and therefore a fee is charged. If at all possible, we ask you to pile this material on your own land. It will biodegrade, with no harm to the environment and provide shelter for wildlife in the meantime. Clean wood means NO paint, stain, oil or other contaminants.

LARGE WOOD OR STUMPS

Large wood (6" in dia. or larger) and stumps are accepted in the same manner, but separate from brush. A fee is also charged for this material. To minimize your wood waste fees please call the scale-house at ext. 206, the operator can tell you how to separate or prepare your wood waste to minimize or eliminate the fee.

continued

CLEAN FILL

Items such as concrete rubble, brick, stone, dirt, sand, and ceramic pots are recycled in clean fill. See the inspector for placement, there is no charge.

PROPANE TANKS

We accept 20 lb. tanks which typically come from gas grills as well as empty small torch or camp style tanks. These can be put in the metal hoppers in the lower area, all at no charge. Other size tanks are accepted but with a \$20 fee.

AEROSOL CANS

Empty cans may be thrown in the scrap metal hoppers on either side of the garbage compactors.

INFORMATIONAL ITEMS

TAG SALE

We operate a secondhand store in both our recycling building (lower level) and bulky waste area (upper level). This upper level area typically has larger items (furniture, windows, doors, etc.). Unwanted items from your home --anything we can put into the store and sell should be left with the attendant. The proceeds go into our general fund and help to keep our sticker fees unchanged.

HOUSEHOLD HAZARDOUS WASTE DAY

The next HHW day will be in the fall of 2015 from 9 – 12:00PM. Look for a sign at the Transfer Station and check our website for the date and a list of items that are acceptable.

STICKERS

Stickers are required and cost \$80.00 for the fiscal year (July 1st). **STICKERS ISSUED TO ONSITE VEHICLE ONLY.** Second vehicle sticker can be purchased for \$5.00 when 2nd vehicle, same household, proof required, enters facility. A six month sticker for \$45 is available for 7/1-12/31 & 1/1-6/30. A contractor/landlord sticker for \$160 is required for residents bringing in waste from a 3rd party **within district** on a frequency of greater than once per month. Motor vehicle registration required for each vehicle, proof of property ownership for non-resident property owners. If you sell your vehicle please peel off the sticker and bring the remnants back for a replacement sticker. Failure to retrieve your current sticker will cost you \$5.00 for

the replacement and potentially let unauthorized people into the transfer station which is supported by your fees and taxes. A \$15.00 one day pass is also available. Stickers are sold at the transfer station during regular operating hours. You may call the gatehouse at 860-379-1972, ext. #104 with questions

MATERIALS AVAILABLE ON SITE

The District has FREE wood mulch and also sells screened topsoil, crushed 1-1/4" minus aggregate and 3" minus stone. Please inquire.

TRANSFER STATION LOCATION

The transfer station is located in Barkhamsted on Route 44 behind the Barkhamsted Public Works Garage (31 New Hartford Road).

HOURS OF OPERATION

Monday, Wednesday, Friday & Saturday 7:00 a.m. to 3:00 p.m. The Bulky Waste area opens at 7:15 a.m. and the scale shuts down at 3:00PM. We are closed on the following holidays: New Year's Day, Memorial Day; Fourth of July, Labor Day, Thanksgiving Day and Christmas Day.

WEDNESDAY NIGHT:

Sticker Holders -- The lower portion of the Transfer Station is open Wednesday Evenings from 4:00 p.m. — 7:00 p.m. for disposal of refuse and recyclables.

Resident Non-Sticker Holders -- The lower portion of the Transfer Station is open Wednesday Evenings from 4:00—7:00 p.m. for disposal of **recyclables ONLY**.

NO BULKY WASTE AREA DISPOSAL IS AVAILABLE WEDNESDAY EVENINGS.

Closing for inclement weather - evening hours will be canceled for any snow/ice event, call the recycling building at extension #104 to confirm.

If you have any questions about recycling, please call Regional Refuse Disposal District #1 at 379-1972 OR CHECK OUR WEBSITE at <http://www.RRDD1.com> for the most up-to-date information. We are also on Facebook at <http://www.facebook.com/RegionalRefuse>.

Recycling Saves Tax Dollars!



This pamphlet is printed on recycled paper.



Regional Refuse Disposal District No. 1
31 New Hartford Rd.
Barkhamsted, CT 06063

Carrier Route-Presort
Postal Customer

PRESORTED
U.S. POSTAGE
PAID
WINSTED, CT 06098
PERMIT NO. 11



**Save Money
Save Resources
Save Our Environment**

RRDD #1

Regional Refuse Disposal District
Barkhamsted, New Hartford and Winsted